

W A L L S Y S T E M S



D R Y W A L L P A R T I T I O N

Description



Drywall partition profiles are manufactured from roll formed hot dipped galvanized steel coils and are available in different sizes and thickness. Our profiles can be assembled on all types of gypsum boards, cement boards & acoustical boards.

The profiles are manufactured from materials that comply with ASTM C 653M. Our finished profiles comply with ASTM C 645.

Installation Guide

- The runner / track are first fixed to floor and ceilings horizontally.
- Studs are then vertically fixed into the runner using suitable fasteners and aligned at 400 / 600mm c.c.
- C channel bracing can be provided horizontally on studs at 600 / 1200mm, if additional rigidity is required.
- The gypsum boards / cement boards / acoustic gypsum boards are longitudinally fixed with suitable fasteners to the studs at a distance of 250mm c.c.
- All joints are taped, and jointing compound is applied. Partition is finished smooth ready for painting.

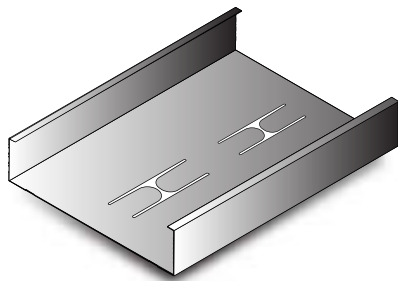
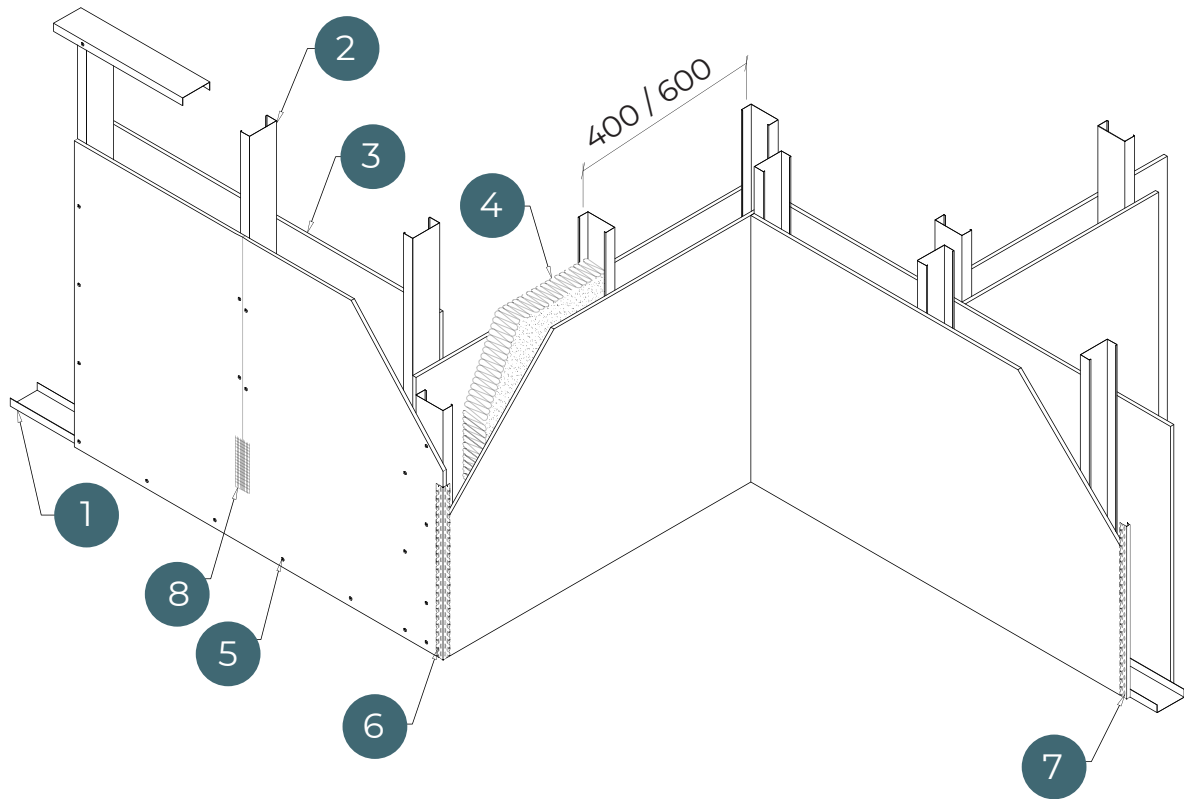
Galvanization coating (standard G40 (Z120) as per ASTM C 645). Standard profiles are produced in 3 meter length. Other galvanization coating requirements or lengths can be supplied upon request on minimum ordering quantity.

The system includes runner / track, studs, gypsum boards / cement boards / acoustic gypsum boards etc apart from the normal accessories like joint compound fillers, screws, nails etc.

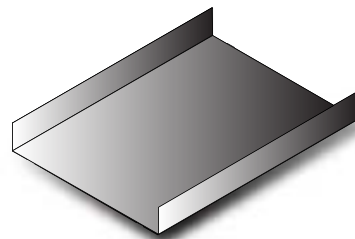
Our partition systems is tested as per ASTM E 119 for 1 hour and 2 hours fire resistance.



Dry Wall Partition



Stud



Runner / Track

Item No.	Description
1.	Runner / Track
2.	Stud
3.	Gypsum / Cement Board / Gypboard Acoustic
4.	Insulation
5.	Dry Wall Screws
6.	Corner Bead
7.	Edging Bead
8.	Fiber Tape



Stud



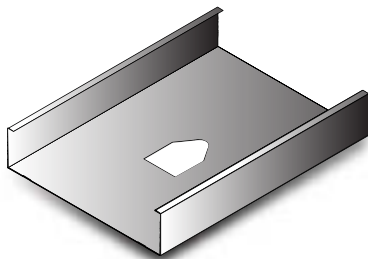
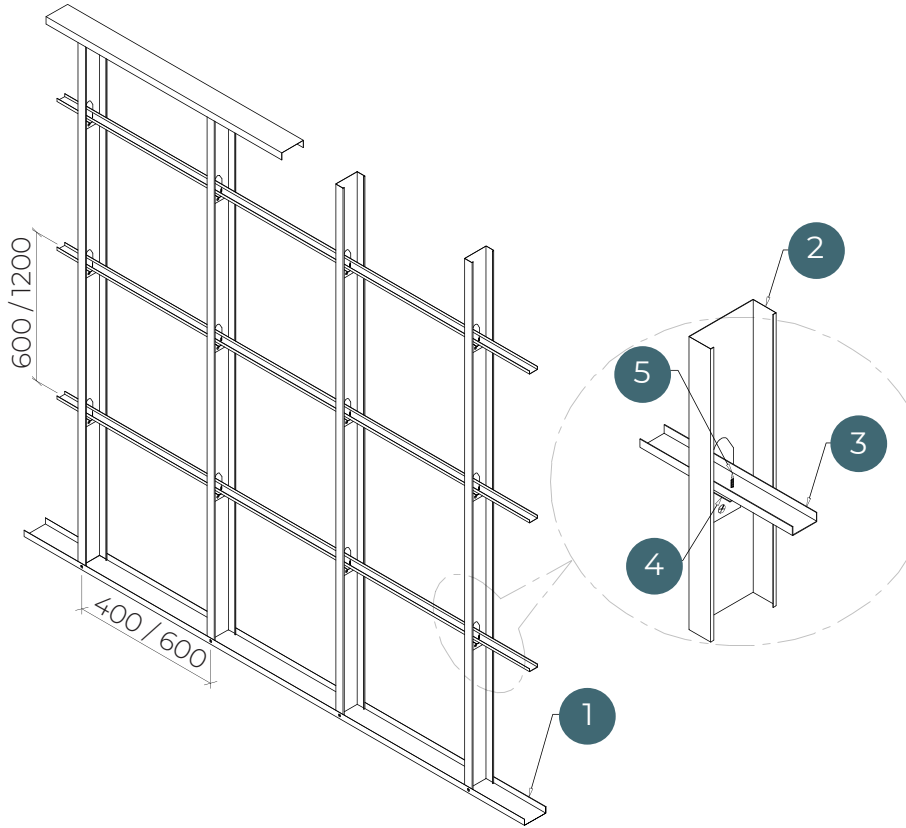
Runner
(Track)

Profiles	Width-W (MM)							
	Stud	48.80	60.80	63.80	70.80	73.80	88.80	98.80
Runner / Track	50.00	62.00	65.00	72.00	75.00	90.00	100.00	150.00

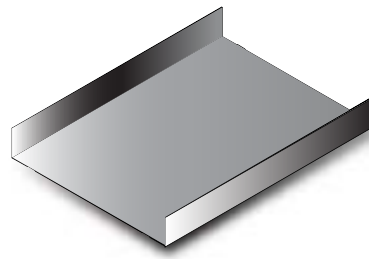
Profiles	Length (MM)	Standard		
		Side Height (MM)		
		Left (L)	Right (R)	Thickness (MM)
Stud	3000	30.20	32.50	0.45
Runner / Track	3000	25.00	25.00	

Profiles	Length (MM)	Special Order			
		Side Height (MM)			
		Left (L)	Right (R)	Thickness (MM)	Standards
Stud	3000	34.20	36.50	0.50 - 0.90	ASTM C 645
		38.50	40.50		
		48.00	50.00		
Runner / Track	3000	25.00	25.00		
		30.00	30.00		
		40.00	40.00		

Dry Wall Partition With C Channel Bracing



Stud



Runner / Track

Item No.	Description
1.	Runner / Track
2.	Stud
3.	C Channel (MC 38)
4.	Steel L Bracket
5.	Screw

DRY WALL PARTITION



Metal Product Company's quality system for production and development is
ISO 9001, 14001, 45001 Certified.



Metal Product Company many years of experience of the optimal utilization of our
steel production system. We place this know how at the disposal of the building
trade both through our printed information materials and personal advice
given to the major projects



P. O. Box 3973, Safat 13040, State of Kuwait, Tel.: +965 2473 1287 / 2473 1291 / 2473 7916, Fax: +965 2473 7932

Email: sales@mpckw.com / info@mpckw.com

www.mpckw.com